

# Summit

BECHTEL RESERVE™



# Brief History

- 2007 – Project Arrow. Nationwide Search for New National Scout Jamboree Site and National High Adventure Base.
- 2009 – Stephen Bechtel and the Bechtel Foundation donate \$50 million. West Virginia selected as the location for the new Jamboree and high adventure facility.
- 2010 – Construction begins.
- 2013 – Phase 1 construction ends. The 2013 National Scout Jamboree is the first event at the Summit drawing over 35,000 participants and staff.
- 2014 – The Paul R. Christen National High Adventure Base at SBR opens.
- 2015 – The James C. Justice National Scout Camp at SBR opens.
- 2016 – The John D. Tickle National Training & Leadership Center at SBR opens.
- 2017 – The 2017 National Scout Jamboree draws 31,000 participants.

# 37°N Main Site

- 10,600 Acres
- Approximately one third of the acreage is part of a conservation easement.
- Camping space for approximately 47,000 people.
- Extensive WiFi and cellular connectivity
- Numerous Action and Adventure Sports Venues



# 37°N Main Site Uses

- Large Events
- BSA Outdoor & Training Programs
- Educational & Non-Profit Outdoor Recreation
- Research & Education









# Largest Cities in West Virginia

- Charleston 49,138
- Huntington 48,113
- Jamboree @SBR 32,000 – 47,000
- Morgantown 30,855
- Parkersburg 30,601













# Other Events

---

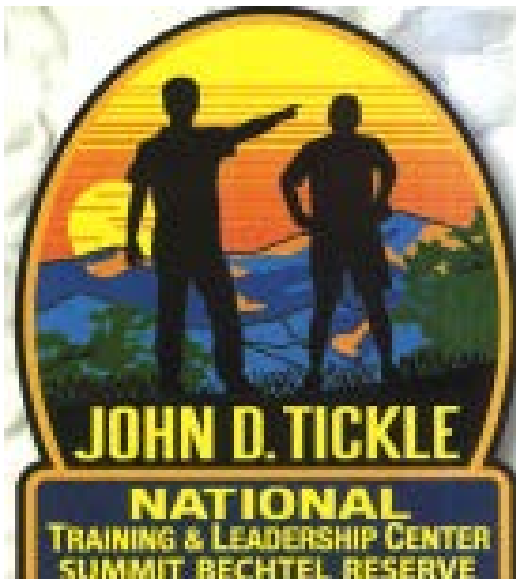




# Educational Partnerships

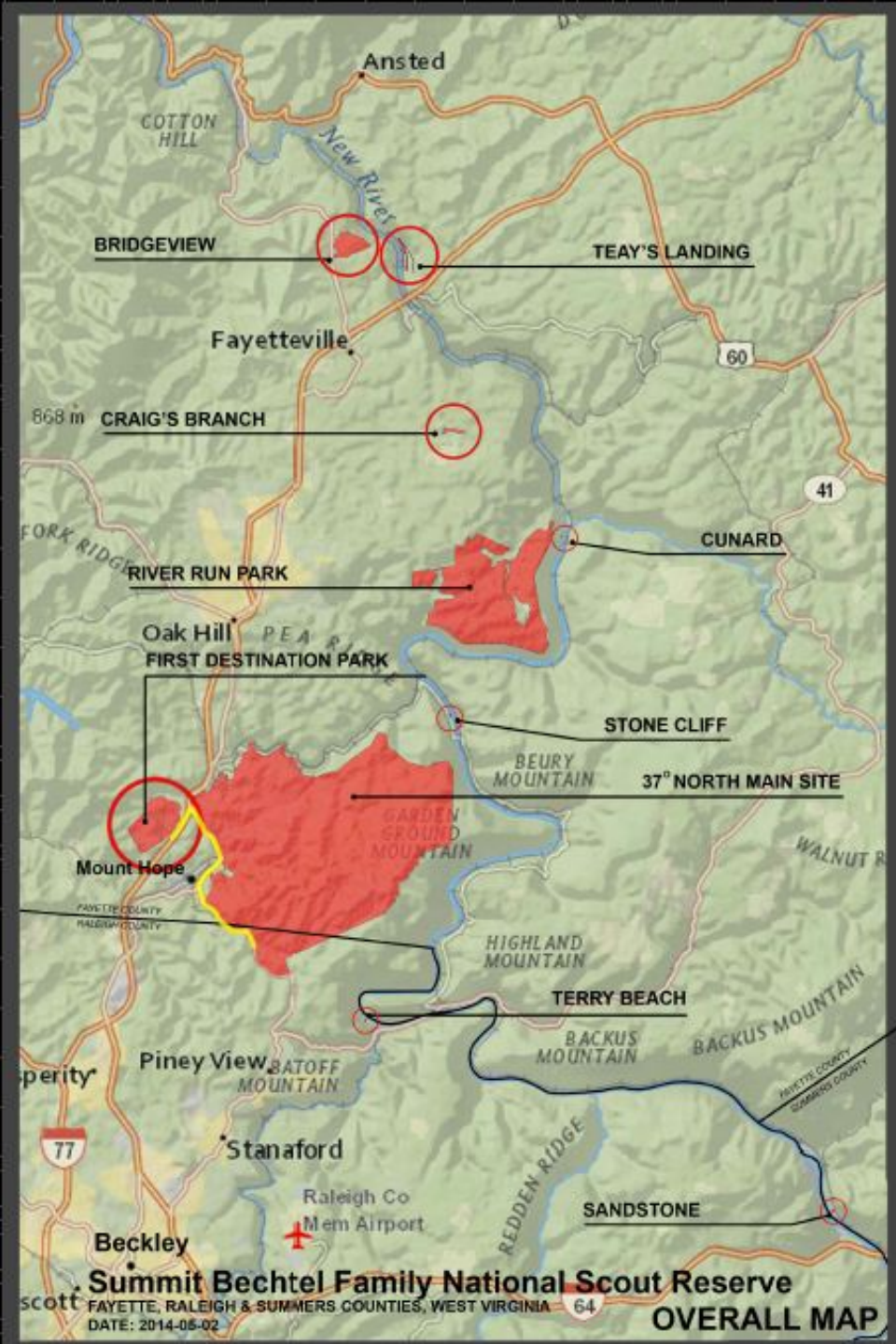
---



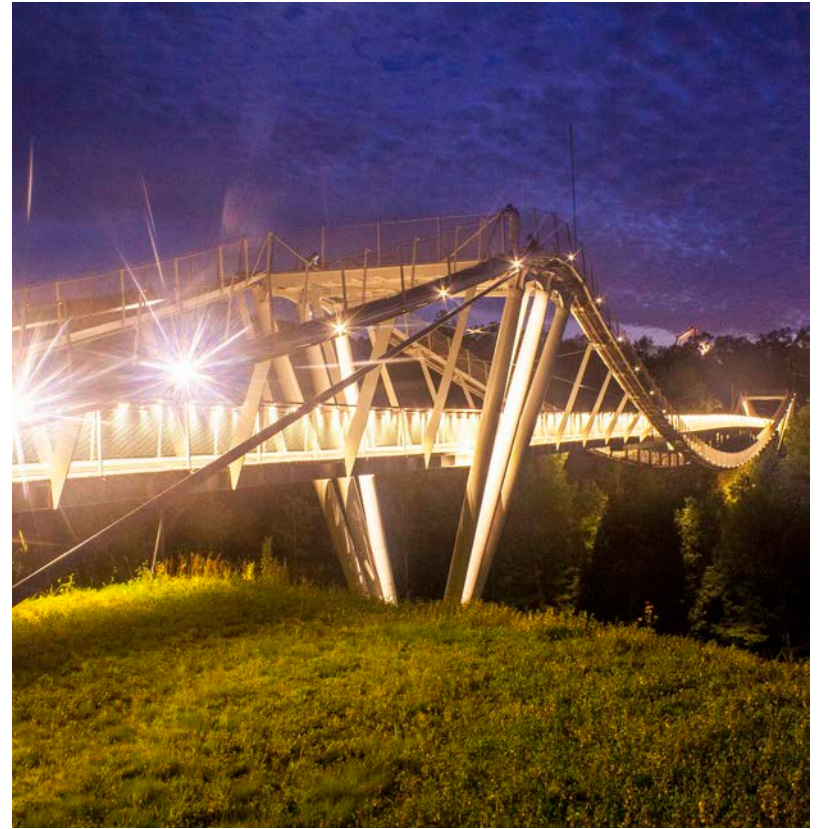


# High Adventure Programs

- Additional 3000+ total acres
- Multiple river access points
- Integrated with 70,000 acre New River Gorge National River
- Primary current use of other properties is primitive camping in support of high adventure trek programs.
- Coordinated with National Park Service and WV DNR.







# CONSOL Energy Bridge

---

Scott Summit Center





# The Park

---

Thrasher Mountain





# Sustainability Treehouse

---





# The Rocks

---

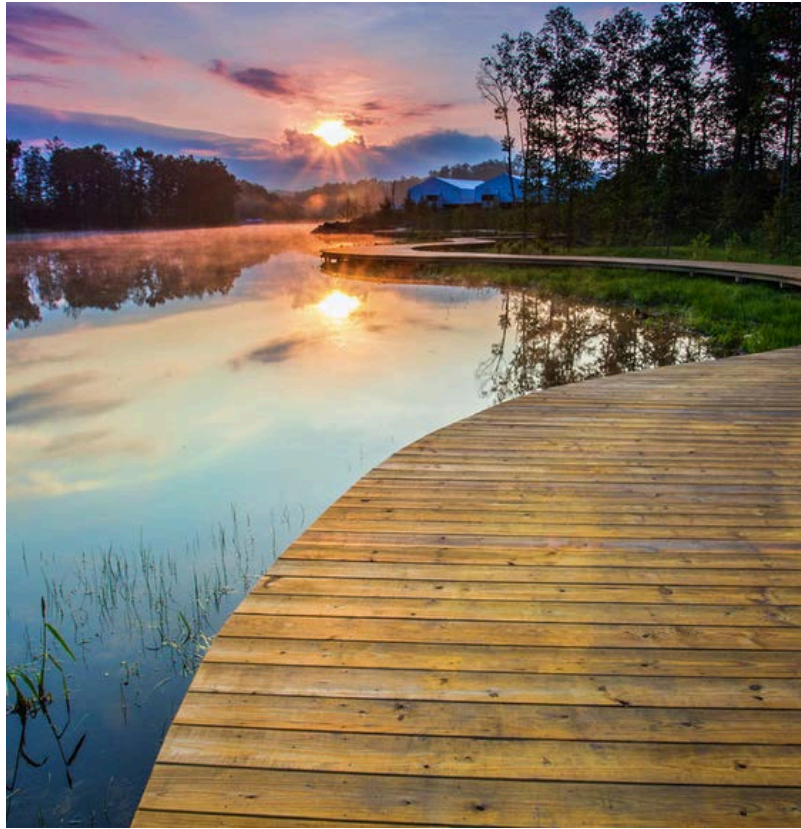




Low & High Gear

---

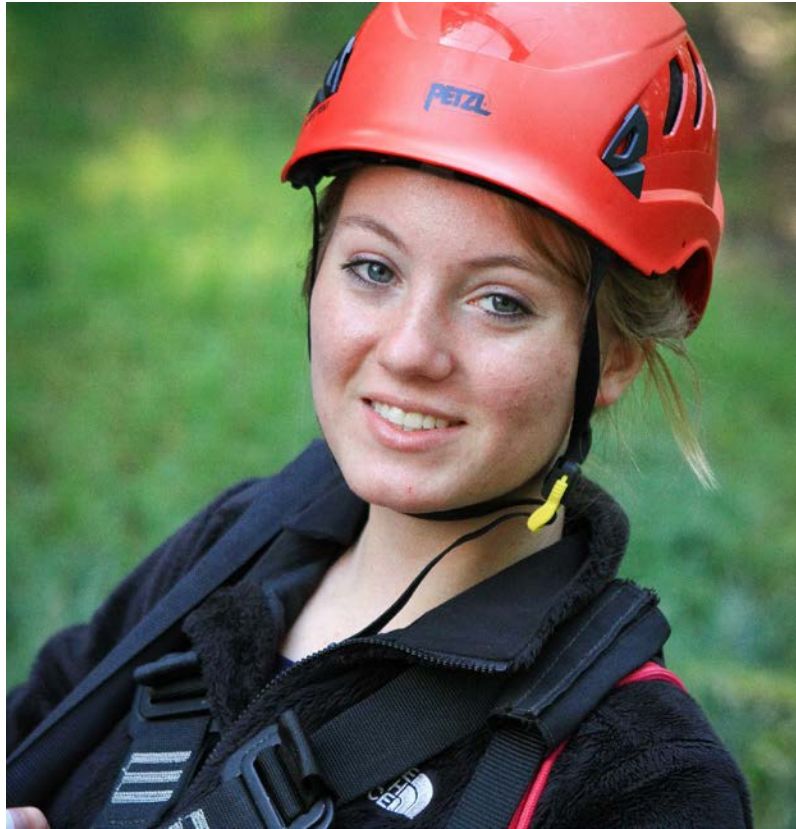




# Goodrich Lake

---





# Zip Lines

---







# Summit

BECHTEL RESERVE™

